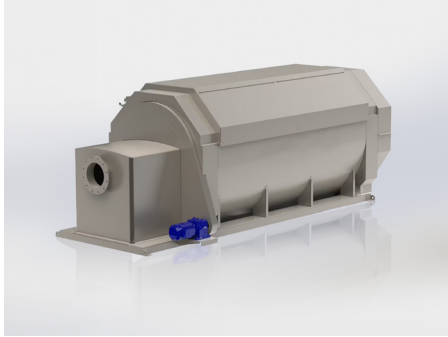




A Sulzer Brand

Rotary Drum Screening Systems

Wastewater Pretreatment



FRC's internally fed rotary drum screens remove coarse solids and reduce TSS/ FOG to protect downstream processes like DAF or MBR.

FRC's Rotary Drum Screen Systems provide the first line of defense in wastewater treatment by removing solids and protecting downstream equipment. Engineered for industrial and municipal use, these internally fed screens offer high capture efficiency, durable stainless-steel construction, and automated low-maintenance operation across a wide range of flow rates and applications.

Wastewater flows into a headbox and spreads across the internal surface of a rotating drum screen. Solids are trapped on the screen's surface while liquid passes through the openings. As the drum rotates slowly, solids tumble, dewater, and are discharged from the bottom. An automatic spray bar periodically cleans the screen without continuous water flow. This slow-speed, internally fed process improves capture rates and protects downstream systems like DAFs and membranes from overload.

Why choose a Rotary Drum Screen?

FRC screens deliver consistent solids removal with reduced water use and lower maintenance. Designed for durability and performance, they extend the life of downstream equipment and improve overall plant reliability—making them a critical component of any high-performance treatment system.

How can we help you?
Contact us today to find
your best solution.



frcsystems.com
+1 770-534-3681

Key Features

- Internally fed drum design for high solids retention
- Slow drum rotation for enhanced solids dewatering
- Stainless-steel construction resists corrosion in harsh environments
- Flat-welded wedge wire or perforated plate screen media
- Automatic cleaning via low-pressure spray system
- Fully enclosed design with headbox, splash guards, and base frame
- Trunnion-mounted for long-term mechanical stability

Specifications

- **Flow Capacity:** Up to 6,500 GPM (1,476 m³/hr) *Application dependent*
- **Screen Openings:** 250 – 2,540 microns (0.010" – 0.1")
- **Drum Sizes:** Up to 80" (2.03 m) diameter and 180" (4.57 m) length
- **Screen Media:** Wedge wire or perforated plate
- **Construction:** Stainless steel (304, 316, duplex, or duplex)
- **Standard Features:** Enclosed headbox, splash guards, chain drive, trunnion wheels, spray bar

Applications

- Food and beverage processing (meat, dairy, produce)
- Industrial manufacturing wastewater
- Primary screening for municipal systems
- Pretreatment before DAF, MBR, or clarifiers
- Cooling water and intake protection

Copyright © FRC Systems International

This brochure is a general product description. It does not provide a warranty or guarantee of any kind. Please contact us for a description of warranties and guarantees offered with our products. Directions for use and safety will be given separately. All information herein is subject to change without notice.